

The Venicia: European luxury and minimalism

Step into the realm of timeless modern living, where the open concept design embraces the abundance of natural light, while the earthy and rich materials radiate warmth and a welcoming atmosphere. Neo Homes' Venicia features five bedrooms, spacious his-and-hers closets, four and a half baths, a floating staircase, and a large balcony from the primary room that faces the infinity pool. The outdoor kitchen, pool, and spa are perfect for entertaining, while lush landscaping provides privacy and evokes a Floridian sanctuary.

Flood insurance not required • Lower property taxes
Great location value • Tremendous resale investment

***Now available for purchase —
Live the life you've always dreamed!***

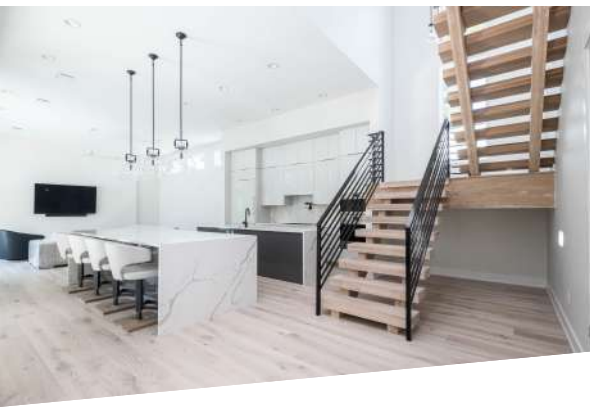
**825 WEST AMELIA AVENUE
TAMPA, FLORIDA 33602**

3,400 SQ. FT. • 5 BEDROOMS • 4.5 BATHS
2 CAR • POOL & SPA • OUTDOOR KITCHEN
OPEN FLOOR PLAN • TROPICAL LANDSCAPING

MODERN DESIGN + FINISHES
INSPIRED BY THE EDITION HOTEL

THE VENICIA

WWW.NEOHOMES.NET



ALESSANDRA FIELD
SALES & MARKETING DIRECTOR
CBC1266393 • SL3511566

813.503.0031
ALESSANDRA@NEOHOMES.NET

3010 NORTH BOULEVARD
TAMPA, FL 33603
WWW.NEOHOMES.NET



FIRST FLOOR



SECOND FLOOR