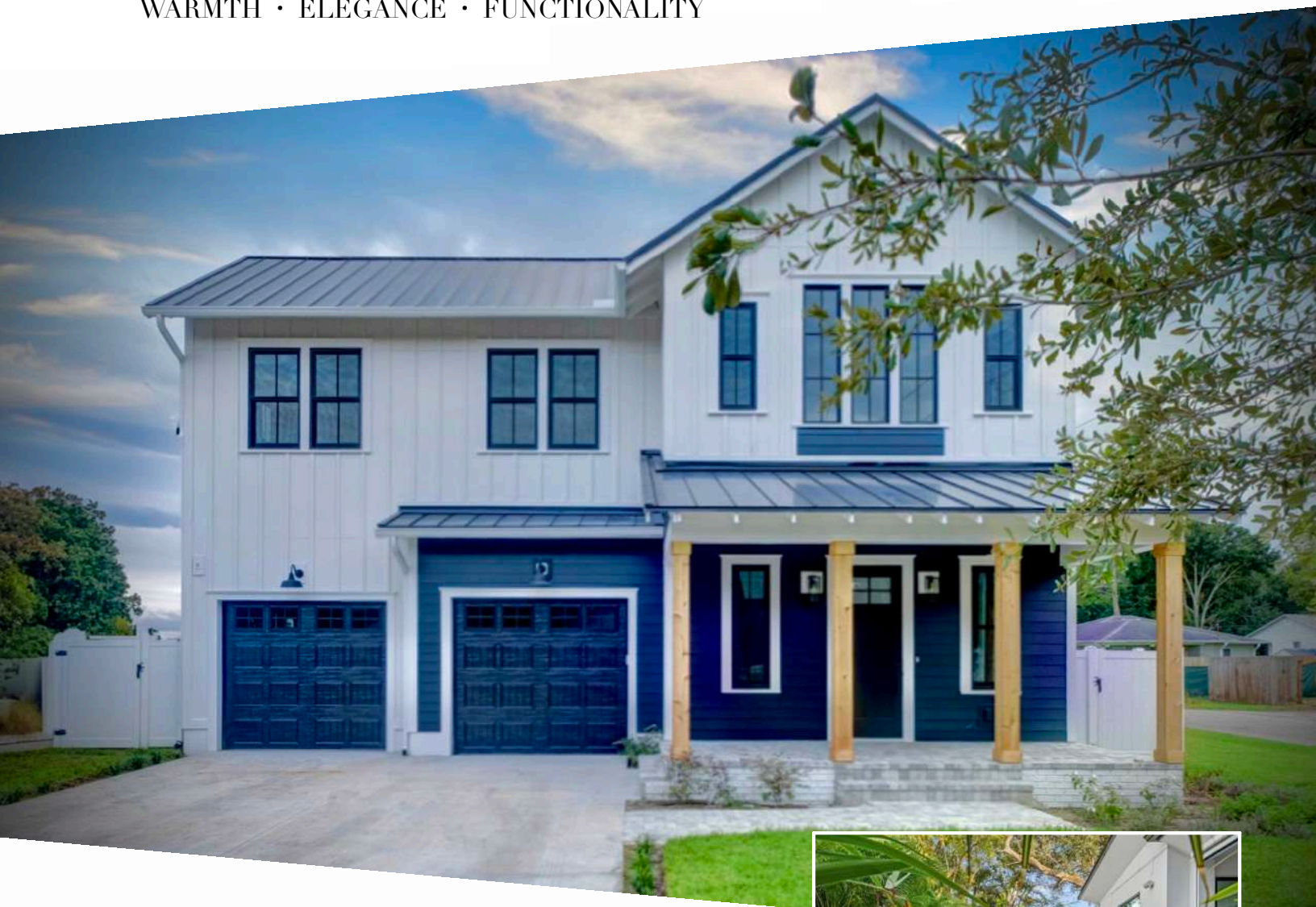


# NEO FARM HOUSE

WARMTH • ELEGANCE • FUNCTIONALITY



## Neo Farm House: European Chic

Explore this stunning 3200+ sq ft farmhouse-traditional country home. With four bedrooms and three-and-a-half bathrooms, two-car garage, covered lanai and pool, it offers ample space for family living and relaxation. It features crown moldings, wooden beams and wall paneling that give the home a stylish European influence. With large porches and an open design, it offers a comfortable and terrific entertaining space. The thoughtful layout, charming details, and warm atmosphere make this home an ideal choice for those seeking both elegance and functionality in a family-friendly space.

"Tampa is special because it has pristine beaches, impressive public transportation, platforms promoting the arts, major sports teams and history museums. It is the best Florida city to live in." - Forbes Magazine

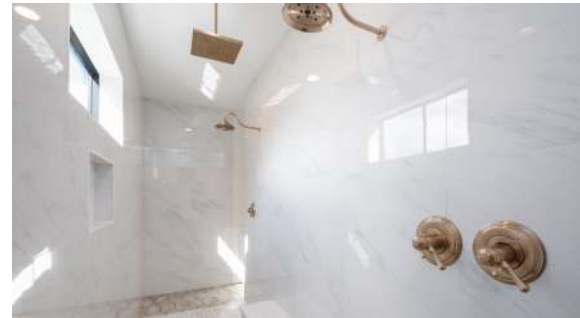


## Build on your lot or ours!

3,200+ SQ. FT.  
4 BEDROOMS • 3.5 BATHS  
2 CAR • POOL & SPA  
22-FT CEILINGS  
OUTDOOR KITCHEN

# NEO FARM HOUSE

WWW.NEOHOMES.NET



## ALESSANDRA FIELD

SALES & MARKETING DIRECTOR  
CBC1266393 • SL3511566

**813.503.0031**

ALESSANDRA@NEOHOMES.NET

3010 NORTH BOULEVARD  
TAMPA, FL 33603  
WWW.NEOHOMES.NET



FIRST FLOOR



SECOND FLOOR