

LA MAISON

SIMPLE ELEGANCE • QUIET SOPHISTICATION



The black and white design is a Neo Homes favorite: it is sophisticated enough to suit both feminine and masculine styles.

This 4000 sq ft estate has six bedrooms with en-suites, ample garage space for three cars, a luxurious chef's kitchen with oversized pantry, office, gym, wine cellar, as well as 22-foot-high ceilings on the first floor. Not only is the entire home energy efficient, but it also has a floating staircase, a pivot front door, impact windows, and a water-vapor fireplace. La Maison also features a second-floor media room with a fabulous balcony that overlooks the enormous lanai and an extraordinary pool area!

"Tampa has become an entrepreneur- and millennial-magnet, with bleisure a way of life. There's never been a more appealing time to touch down [to] plenty of sun, sand, and sea." - Time Magazine



Build on your lot or ours!

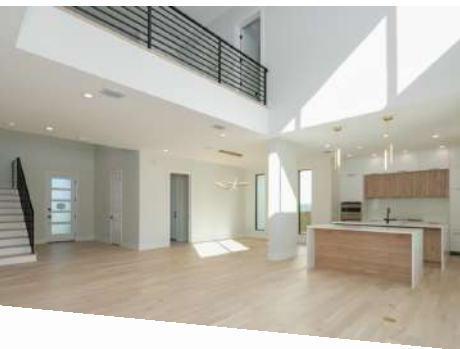
4,000+ SQ. FT.

6 BEDROOMS • 6.5 BATHS

3 CAR • POOL & SPA

OPEN FLOOR PLAN • 22-FT CEILINGS

OUTDOOR KITCHEN • FIREPLACE



FIRST FLOOR



ALESSANDRA FIELD
SALES & MARKETING DIRECTOR
CBC1266393 • SL3511566

813.503.0031
ALESSANDRA@NEOHOMES.NET

3010 NORTH BOULEVARD
TAMPA, FL 33603
WWW.NEOHOMES.NET



SECOND FLOOR